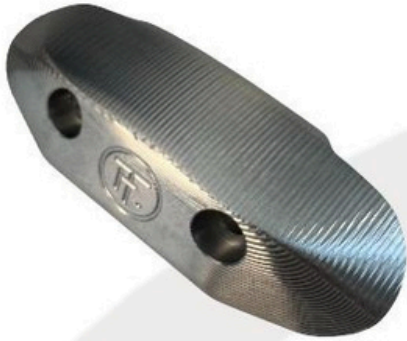


Fine  Tuned

BOUNCE FLANGES



W (WIDE)

STABILITY AND CONSISTENCY



M (MID)

BALANCED STABILITY AND VERSATILITY



S (SLIM)

VERSATILE AND ADAPTABLE





Choose Your Perfect Wedge Setup

Every Fine-Tuned wedge is built around two key decisions:

1. Your Sole Profile (Grind)
2. Your Bounce Angle

Pick the combination that matches how you play and the turf you play on.

Sole Profiles (Grinds)

W Grind - Stable & Forgiving

A wider sole for maximum stability. Great for players who keep the face square and want extra help through the turf. Ideal for consistent, reliable shots around the green.

M Grind - Stable & Versatile

Perfect if you mostly play with a square face but still want the ability to open the blade when needed. Slight trailing-edge relief gives you added creativity without sacrificing control.

S Grind - Most Versatile & Adaptable

A slimmer sole and higher CG for players who like to hit a wide variety of shots. Easy to manipulate the face for greenside creativity and shot-making.

Bounce Options

High Bounce - “Stability”

Best for soft turf, fluffy sand, and players who take bigger divots. Helps keep strikes lower on the face and improves forgiveness.

Mid Bounce - “Versatility”

The most all-round option. Works well on all turf types and suits golfers who want one wedge that performs anywhere.

Low Bounce - “Precision”

Great on firm turf and tight lies, or for players with shallow swings. Keeps the leading edge tight to the ground for clean, precise contact